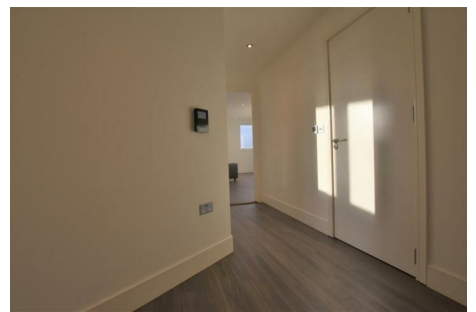




Parkfields

Estates



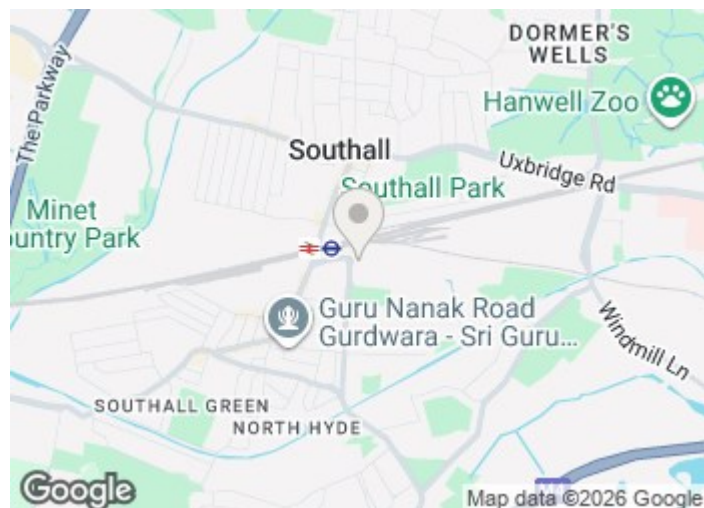
Healum Avenue , Southall, UB2 4WL

PARKFIELDS ESTATES Are Pleased to Offer FOR RENT THIS FANTASTIC MODERN NEW BUILD FLAT, It is Located on the 2ND FLOOR, 1 BEDROOM, LOUNGE, MODERN BATHROOM, OPEN PLAN KITCHEN LOUNGE, BENEFITS From a good SIZE BALCONY, Situated A STONE THROW AWAY FROM SOUTHALL STATION EASY LINKS IN TO LONDON PADDINGTON AND HEATHROW, Close to local Shops, Schools and Public TRANSPORT
AVAILABLE NOW

EALING COUNCIL

£1,650

Butleigh House Healum Avenue , Southall, UB2 4WL



[Directions](#)





Floor Plan

These particulars, whilst believed to be accurate are set out as a general outline only for guidance and do not constitute any part of an offer or contract. Intending purchasers should not rely on them as statements of representation of fact, but must satisfy themselves by inspection or otherwise as to their accuracy. No person in this firms employment has the authority to make or give any representation or warranty in respect of the property.

